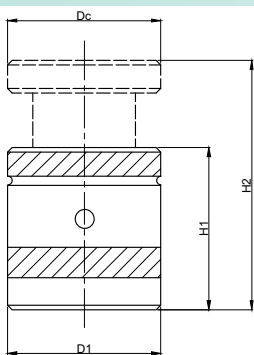


► Screw Jack (PCSJ)

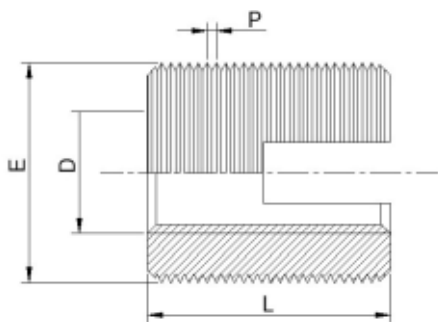


Material :- EN8D
Hardness :- 28 - 30 HRC

Order Type :- Code X Range
Example :- PCSJ X 50-70

Code	Range H1 - H2 mm	Base Dia. D1 mm	Cap Dia. Dc mm	Static load max Kn
PCSJ	40-50	32	32	12
	50-70	50	50	60
	70-100	50	50	60
	100-140	70	70	100

► Self Tap Thread Inserts



Material :- Steel & Stainless Steel

Order Type :- Code
Example :- PATI M12

Internal Thread	External Length Thread		Minimum	borehole depth for blind holes	Code
	E	P			
M 2	4.5	0.5	6	8	PATI M2
M 2.5	4.5	0.5	6	8	PATI M2.5
M 3	5	0.5	6	8	PATI M3
M 3.5	6	0.75	8	10	PATI M3.5
M 4	6.5	0.75	8	10	PATI M4
M 5	8	1	10	13	PATI M5
M 6(a)	9	1	12	15	PATI M6(a)
M 6	10	1.5	14	17	PATI M6
M 8	12	1.5	15	18	PATI M8
M 10	14	1.5	18	22	PATI M10
M 12	16	1.5	22	26	PATI M12
M 14	18	1.5	24	28	PATI M14
M 16	20	1.5	22	26	PATI M16
M 18	22	1.5	24	29	PATI M18
M 20	26	1.5	27	32	PATI M20
M 22	26	1.5	30	36	PATI M22
M 24	30	1.5	30	36	PATI M24
M 27	34	1.5	30	36	PATI M27
M 30	36	1.5	40	46	PATI M30